



Information Guide

GLAMPING SAFARI TENTS

SouthCoastRetreat.com

Pet Friendly | People Friendly



WELCOME TO GLAMPING **SAFARI TENT**

Welcome to South Coast Retreat at Greenwell Point! We're delighted to have you stay in our beautiful waterfront studio cabin. Nestled along the serene shores, our retreat offers the perfect escape for relaxation and adventure. Whether you're here to unwind, explore the local charm, or indulge in fresh seafood, we hope you enjoy every moment. Sit back, soak in the stunning scenery, and make yourself at home. If there's anything we can do to enhance your stay, just let us know. Enjoy your getaway!





LAYOUT GLAMPING SAFARI TENTS

All accommodation at South Coast Retreat is slightly different so we hope these pages help.

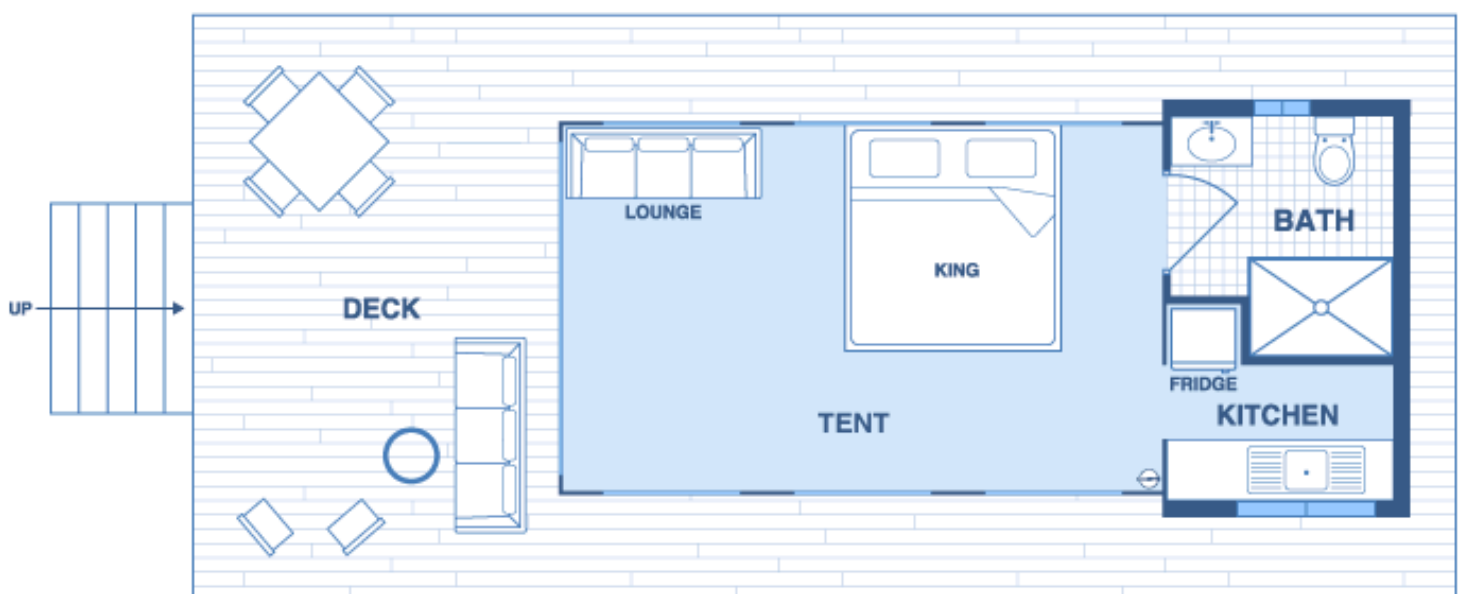
Tent 15 and 16 are the only tents with king size beds.

These tents can also be setup for children.

Please note the king bed does make the space more cramped, when we setup the single beds for children.

LEGEND:

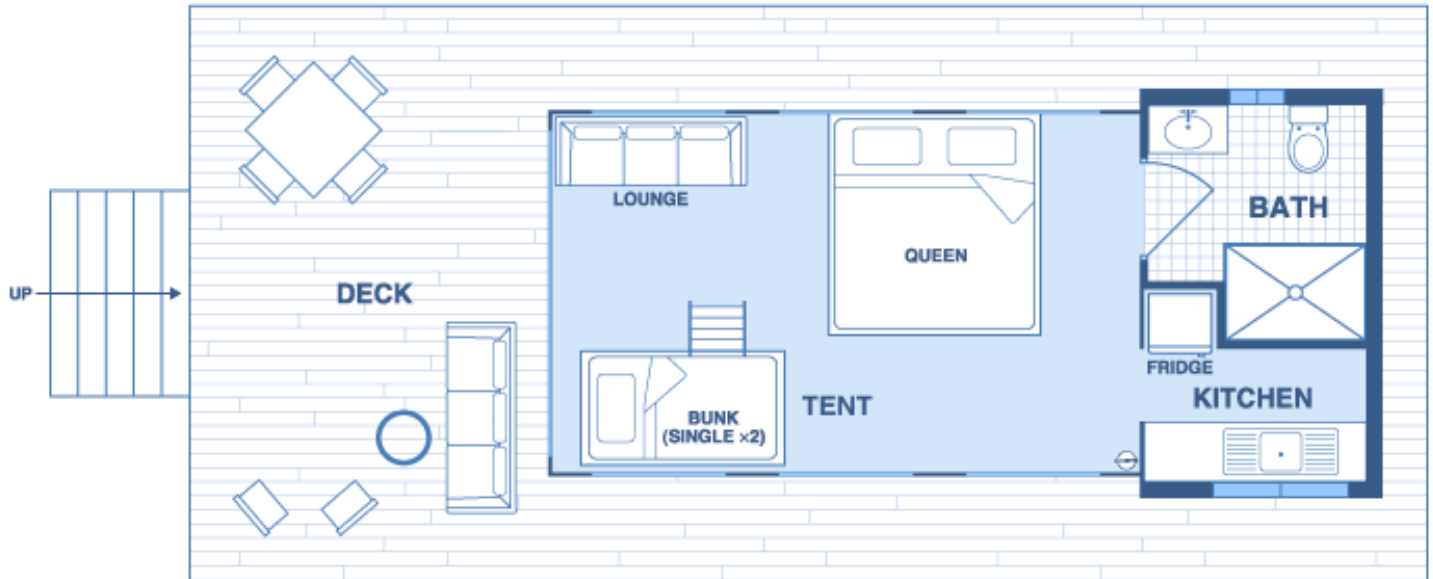
 - FIRE EXTINGUISHER



GLAMPING SAFARI TENTS
15 AND 16

LEGEND:

🔥 - FIRE EXTINGUISHER



GLAMPING SAFARI TENTS
11, 12, 13 AND 14

Tents 11, 12, 13, and 14 are equipped with queen beds, and also include bunk beds to accommodate children.

Please note: for safety reasons, the top bunk is not suitable for children under the age of 9. Younger children should only sleep on the bottom bunk."

Note that in some tents, the kitchen or bathroom may be located on the opposite end of the floor plan."



PARKING

A parking space for one vehicle is at the southern end of the property as shown in the [SITE MAP](#)

If you have a second car or trailer please ask us if there is available parking space on grounds or use the public car park opposite South Coast Retreat.

DECK

The deck is a lovely place to sit and while away time looking over the Crookhaven Estuary.

There is a gate on the deck to help manage toddlers and pets.

WIFI

Network Name: choose any of the network names below and enter password SCRGuest | SCRGuest1 | SRCguest2 | SCRGuest4

PASSWORD **Firepit!**

Or scan the QR code located in the kitchen

KITCHEN

The kitchen is well equipped including electric hotplate, microwave, large refrigerator, utensils, crockery, kettle, & toaster.

Complimentary start-up supplies of tea, coffee & biscuits are provided. A highchair or Porta-cots are available upon request with our compliments.

SLEEPING

The main bed is queen or king-size. Porta-cots are available upon request when booking with our compliments.

BATHROOM

Complimentary toiletries, hand towel, bathmat and bath towels are provided. A hair dryer, extra toilet paper are located in the vanity under the sink.

FIREPIT

Fires are permitted between the hours of 9am – 10pm and subject to fire bans. They must be supervised by an adult at all times and must be fully extinguished before being abandoned. Kindling and wood are available behind Waterview Cabins 9 and 10 and Firestarters located in the cupboard of the outdoor kitchen near the Laundry.

ELECTRICITY


Safety/isolation switches are located in a switchboard outside the tents. Please click on [SITE MAP](#) to locate your tent and corresponding switchboard.

For your safety, if the power fails, please unplug all appliances (especially toasters, hairdryers, and heaters) and switch off the PowerPoints before attempting to switch on any safety switch in the cupboard or switchboard.

HOT WATER

The instant gas hot water system starts automatically when a hot water tap is opened. If the system fails the electricity may have shorted. See “ELECTRICITY” above.





EMERGENCY PROCEDURES PLAN

[LINK to Emergency Procedures Plan](#)

Please note that we do not have a reception, but we are always happy to assist you in any way we can. You can reach us by phone 24 Hours a day on **02 4447 1207** for any questions or assistance during your stay.

In case of an **emergency**, please dial 000 instead of the office number.
We hope you have a wonderful stay!

PLEASE SEE OTHER HELPFULL LINKS BELOW

[GREENWELL POINT](#)

[BEACHES](#)

[ACTIVITIES](#)

[GASTRONOMIC EXPERIENCES](#)

WE LOVE HAVING YOUR FUR BABIES STAY WITH US!

We understand that pets are part of the family, and we're delighted to welcome friendly dogs inside all our cabins all year round. However, to ensure a comfortable and enjoyable experience for all guests, both human and furry, we kindly ask you to follow a few simple guidelines.

WE LOVE HAVING YOUR FUR BABIES STAY WITH US!

While we love having dogs stay with us, we do ask that they are not left unattended in the cabin. Being in a new environment can sometimes cause distress, and we want to make sure your pet feels safe and secure at all times. If you plan on heading out, please arrange for your dog to join you or have someone stay with them.

To maintain a clean and cozy environment for all guests, please:

- ✓ Keep your dog off furniture and bedding.
- ✓ Ensure they are fed and given water outside.
- ✓ Pick up after your dog immediately to keep our surroundings pleasant for everyone. (Tip: Dog waste bags are conveniently located near the outdoor BBQ area for your use.)



Consideration for Other Guests

We want every guest, including those without pets, to have a relaxing and stress-free stay. Please keep your dog well-controlled and well-behaved to prevent any disturbances. If your dog is prone to excessive barking or nervous behavior, please take measures to keep them calm and comfortable.

OUTDOOR BBQ KITCHEN & LAUNDRY

BBQ | EAT | RELAX | LAUNDRY SORTED & REPEAT!

We've created a dedicated BBQ and kitchen area, designed with your convenience in mind. Now you can enjoy delicious grilled meals without any hassle!

This new space is fully equipped with everything you need, including plates, cutlery, Fridges, Microwave, toaster, Kettle and all the necessary utensils. So, you can leave your room's supplies where they are and come straight to the BBQ area for all your eating needs.

DO NOT FORGET TO REMOVE THE LINK after using the dryer.

DID YOU FORGET SOMETHING OR NEED A SNACK

We have a vending machine for all your personal items or midnight snacks!

HOW TO USE THE OUTDOOR BBQ

STEP ONE

Turn on the gas cylinder by turning knob to the left (large cylinder located to right of BBQ)

STEP TWO

Turn yellow safety tap to face the direction of the piles (located to the right of BBQ)

STEP THREE

Turn BBQ knob to the left until you hear a click, and it will ignite till you hear a click. Enjoy your Barbecuing.

STEP FOUR

Remember to turn of the

Games and books are available in the laundry at the amenities block. Please return books & games so everyone gets a turn

There is also a small herb garden behind cabin 6 for your use when cooking at the retreat

A Small Request for a Great Stay!

As we are located on the beautiful South Coast, friendly insects can quickly find their way into the accommodation after check-out. To help keep the space fresh and free of unwanted guests for the next visitors, we kindly ask that you remove your rubbish before leaving. Your help is truly appreciated in ensuring an enjoyable stay for everyone!

We support the local men's shed. Could you please put your plastic bottles and cans in the recycling bins so they can "return and earn".

When departing please lock your accommodation and return keys to the key safe located at your entrance. When closed please scramble the tumblers.

As you probably know, we rely on positive online reviews to promote our small family-owned business. If you could spare a minute to write us review on

[Google](#)

[TripAdvisor](#)

or another platform we would not only be grateful if you let us know we can send you instructions to receive 10% off when booking with us next.

**We hope that you enjoy
your time at the South
Coast Retreat.**

